

Using your storage heater

Safety and power

- For your safety, please don't put anything 30cm (1 foot) in front of the heater
- Make sure both switches next to the heater are turned on
- During the summer when things are warmer, you can turn both wall switches off
- But remember to turn them back on in autumn when the weather turns colder
- Storage heaters can get very hot, so avoid direct contact and be careful with children, pets or those who are more sensitive to heat

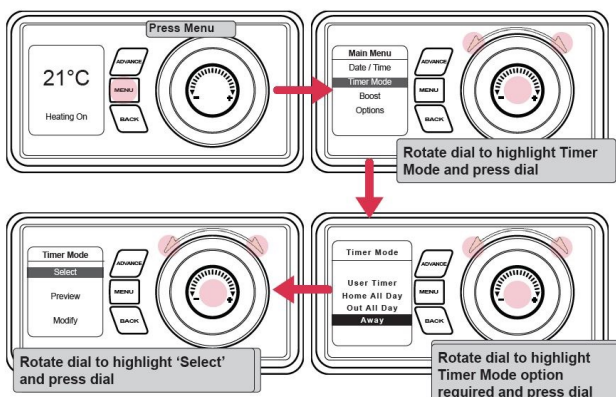
Time

- The time and date are set in the factory, and you shouldn't need to change them
- The time is automatically adjusted in spring and autumn too

Timer modes

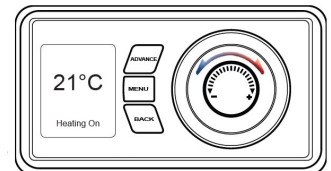
Your heater comes with four timer modes:

- **Out all day:** (factory setting) 7.5 hours of heating per day, in the morning and evening
- **Home all day:** 11 hours of heating per day, over four heating periods
- **User timer:** You can choose how long you want each of the four heating periods to be over 24 hours
- **Away:** You can set the temperature and number of days you'll be away for, and the heating will be back to normal on you return



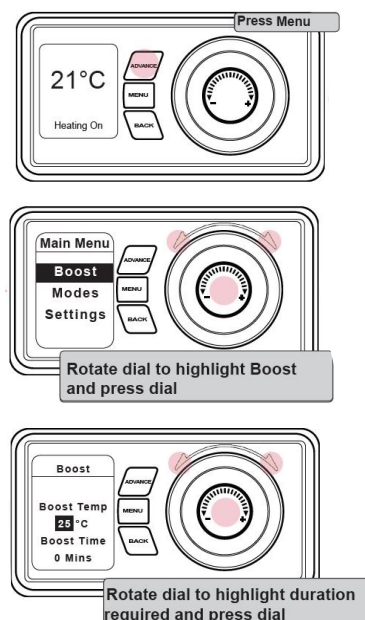
Temperature

- The temperature is set at 21°C which represents a typical, comfortable room temperature
- The temperature shown on the display is the room temperature setpoint
- The heater will maintain the temperature displayed when it's on
- If the room temperature is above this temperature, then the fan won't turn on
- If you'd like things a little cooler, or hotter, you can rotate the control dial either right or left
- **Remember:** you don't need to turn the temperature down over night!



Heating boost

- You can boost up your heating temperature for up to four hours
- Once the boost has run for the selected time, it will automatically switch off, and return to the previous setting
- **Remember:** The boost function uses peak rate electricity and could cost you more money



Please refer to your operating instructions for more information.

Not sure if your storage heaters are working?

